

Concerto pour Violon et Orchestre

Oboe I

apres la
3 eme SONATE pour Piano et Violon
(dans le caractere populaire roumain)
(La mineur)

Op. 25

Georges ENESCO
Valentin Doni

Moderato malinconico ♩ = 50

I

The musical score for Oboe I consists of nine staves. The first staff (measures 1-5) begins with a treble clef, a 4/4 time signature, and a tempo marking of 'Moderato malinconico' with a quarter note equal to 50. It features a triplet of eighth notes, followed by a series of eighth notes with accidentals, and ends with a triplet of eighth notes. The second staff (measures 6-14) starts with a measure rest, followed by a triplet of eighth notes, a 2/4 time signature change, and a 4/4 time signature change. It includes dynamic markings of *p* and *pp*. The third staff (measures 15-26) contains measure rests, a 4/4 time signature change, and a 2/4 time signature change. The fourth staff (measures 27-31) begins with a 4/2 time signature change and a tempo marking of ♩ = 60. It includes a section marked 'In 8' and dynamic markings of *mp* and *p*. The fifth staff (measures 32-33) features a series of eighth notes with accents. The sixth staff (measures 34-37) includes a section marked 'poco rit.' and a 3/4 time signature change. The seventh staff (measures 38-42) starts with a 4/4 time signature change, a tempo marking of ♩ = 55, and a section marked 'In 4'. It includes a dynamic marking of *ff* and a 2/4 time signature change. The eighth staff (measures 43-45) begins with a 6/4 time signature change and a section marked 'tranq. dolce'. The ninth staff (measures 46-53) includes a tempo marking of ♩ = 50, a section marked 'pochiss. rit.', a measure rest, a section marked 'a tempo' with ♩ = 50, and a 3/4 time signature change. It ends with dynamic markings of *p* and *pp*. The final staff (measures 53-54) is a blank staff with a treble clef and a tempo marking of ♩ = 45.

Oboe I

54 9 ♩=50 3

59 ♩=45 10 ♩=50 *ppp* *p*

63 *p* ♩=45 2

66 11 ♩=50 5 6

68 ♩=40 ♩=52 6 6

71 ♩=50 12 ♩=50 3 *mf*

76 *espressivo* 3 3 3 5 3

78 13 3 ♩= ♩ *mf* *poco rit.*

83 *p*

86 14 a tempo ♩=50 ♩= ♩

Oboe I

3

90 $\text{♩} = 50$

93 15 $\text{♩} = 50$

94 $\text{♩} = 50$

97 *rit. molto tranq.* 16 $\text{♩} = 50$ *pochiss. animato*
 $\text{♩} = 58$

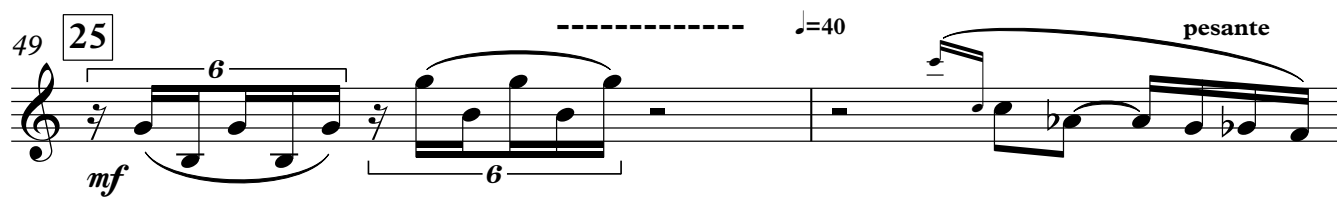
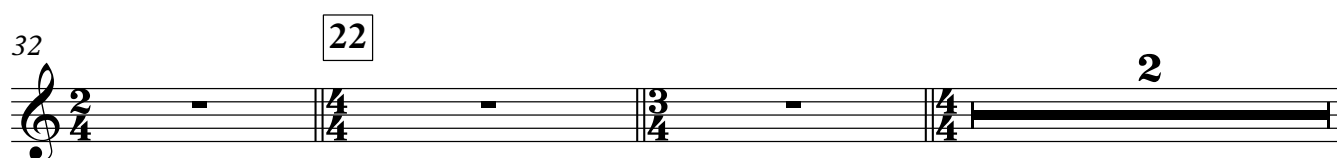
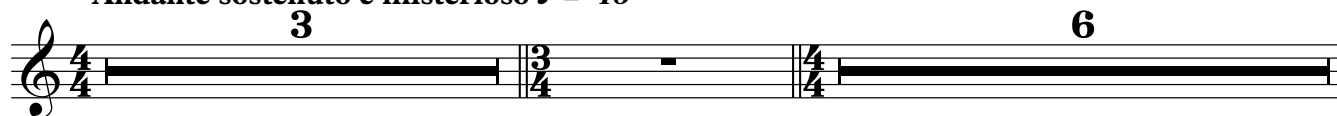
101 *ca - lan - do - poco a poco - poco allarg.* 17 $\text{♩} = 60$ *pochiss. rit. - esitando, tranq.*

106 $\text{♩} = 45$ *poco rallentando - a Tempo lento*
molto espress. pensieroso

110 18 *senza rigore - - - a Tempo I molto tranq.*

Oboe I

II

Andante sostenuto e misterioso $\text{♩} = 46$ 

Oboe I

2 54 $\text{♩} = 52$

f

poco allarg. ----- al Tempo I $\text{♩} = 46$

56

27

fff

58

sost.----

fff

59

a tempo $\text{♩} =$

61

63

28

4

3

68

3

70

29

6

80

30

31

5

8

Allegro con brio, ma non troppo mosso ♩ = 110

mp

7

12

32

16

31

33

12

mf

mp

46

34

14

35

♩ = 120

12

3

p

pp

79

36

6

p

90

37

6

poco cresc

mf

101

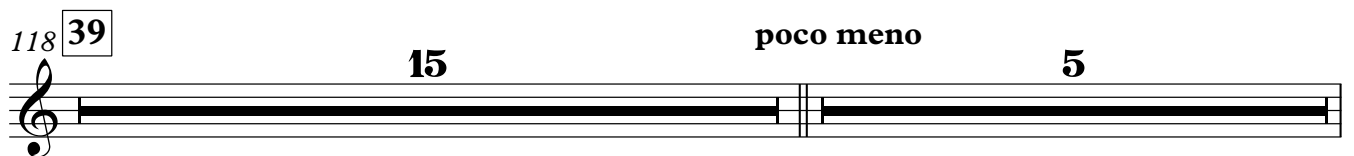
106

38

8

pp

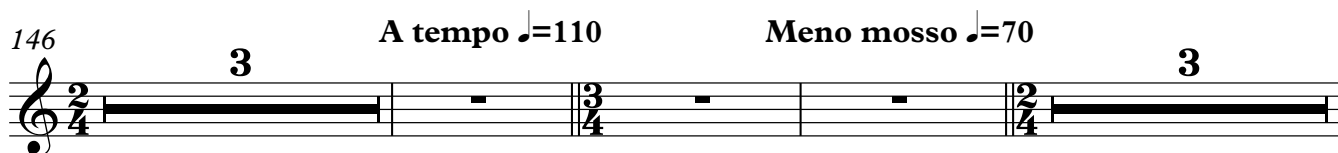
118 **39** **15** poco meno **5**



138 **40** **Meno mosso** ♩=70 **A tempo** ♩=110 **Meno mosso** ♩=70



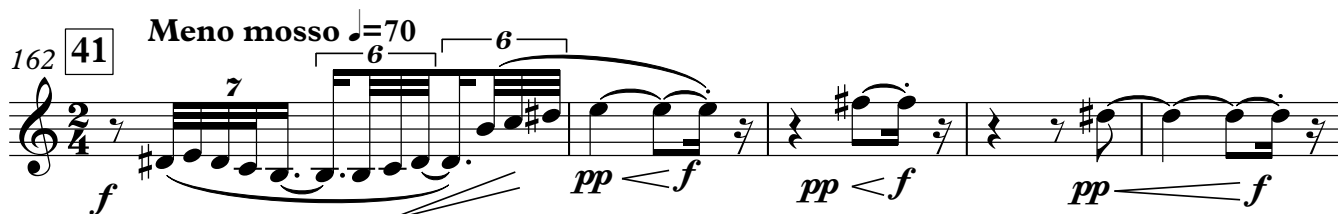
146 **3** **A tempo** ♩=110 **Meno mosso** ♩=70 **3**



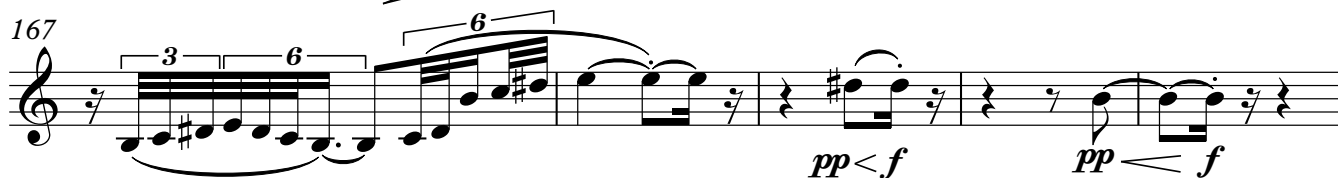
155 **A tempo** ♩=110 **Meno mosso** ♩=70 **A tempo** ♩=110



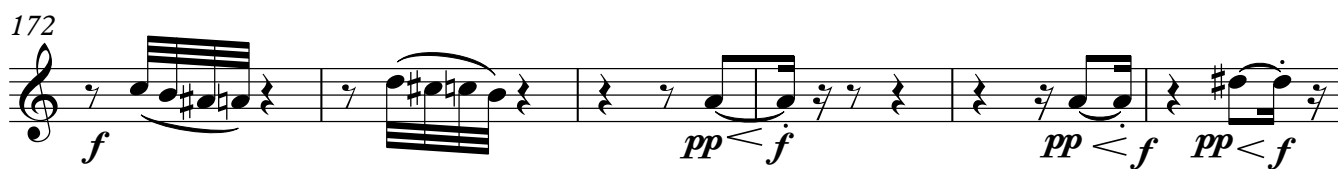
162 **41** **Meno mosso** ♩=70



167



172




178 **42** **A tempo** ♩=110



183



187



191

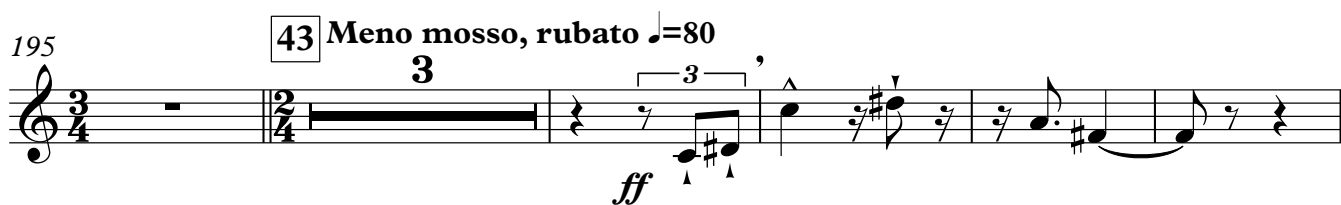


195

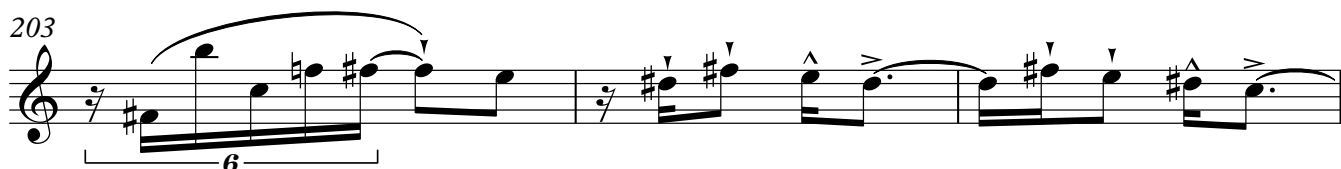
43 **Meno mosso, rubato** ♩=80

3

ff



203



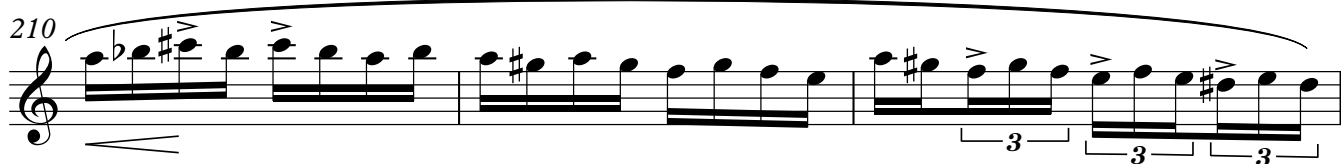
206

Tempo primo ♩=110

Meno mosso ♩=80



210



213

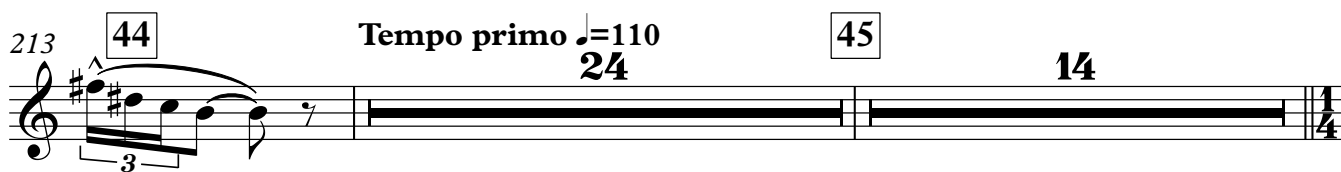
44

Tempo primo ♩=110

24

45

14



252

3

4

f

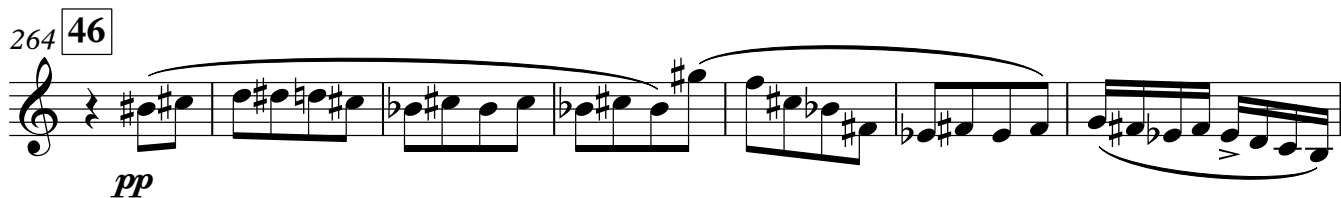
mp



264

46

pp



271

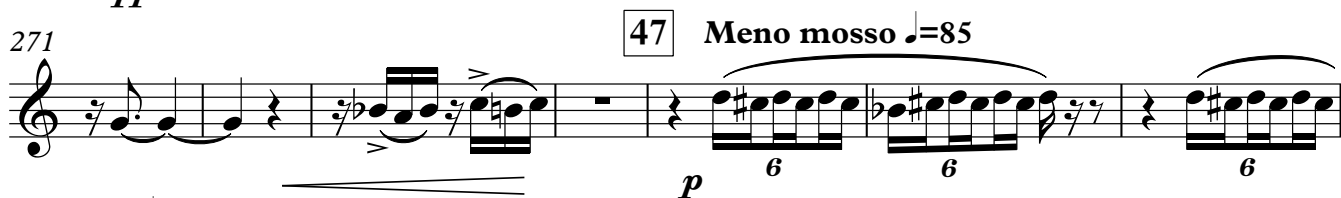
47 **Meno mosso** ♩=85

p

6

6

6



278

♩=80

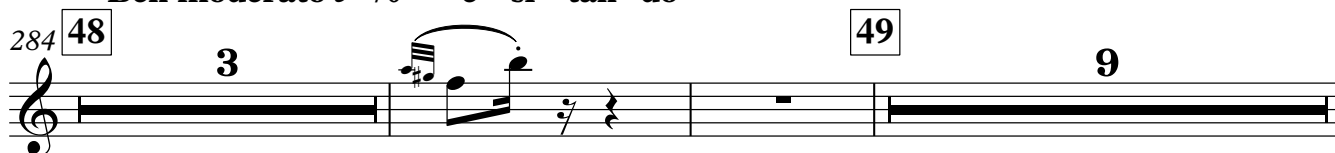
6

6

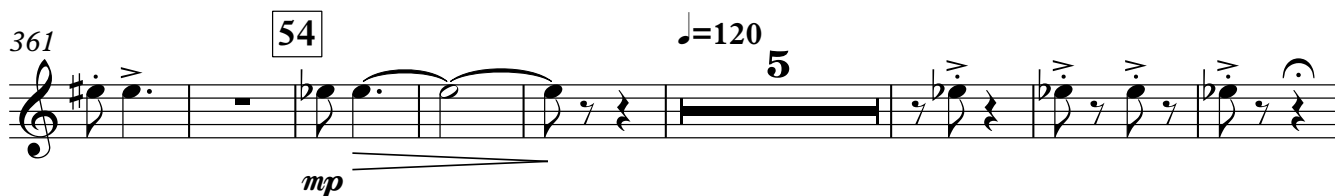
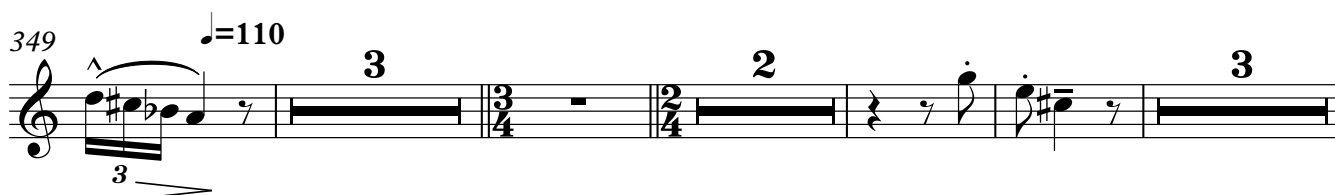
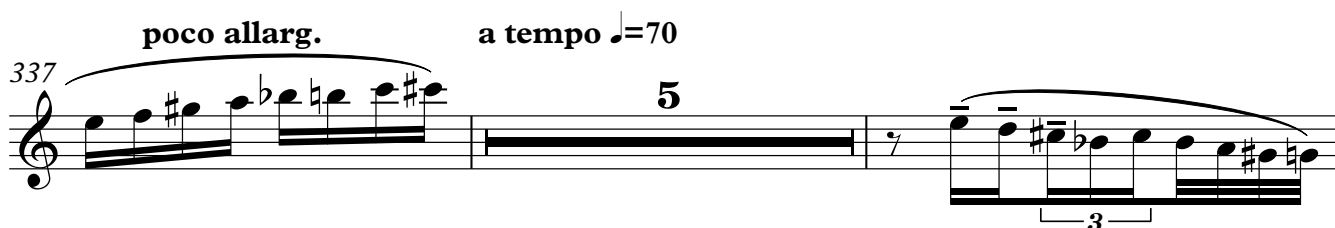
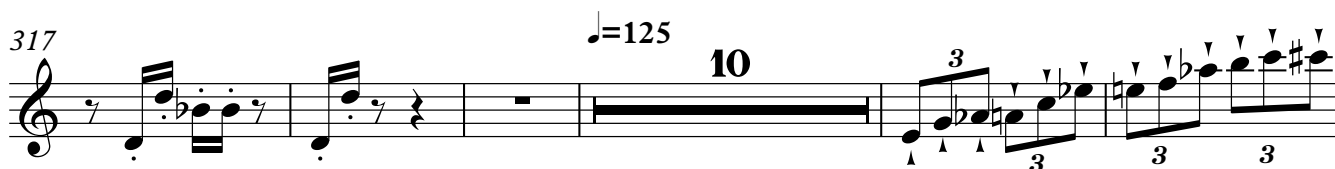
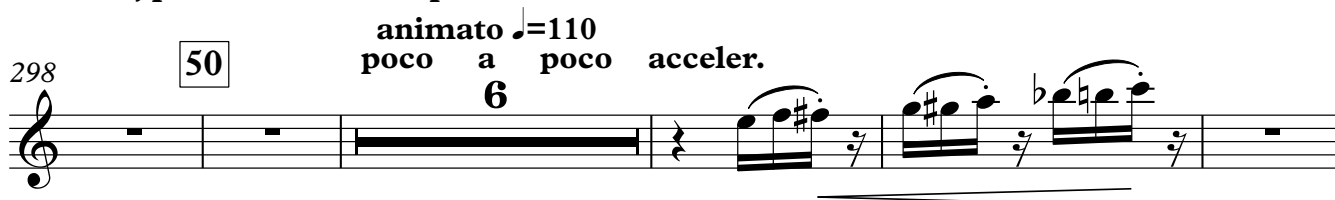
6

3



Ben moderato $\text{♩}=70$ e - si - tan - do

esitando, poco accel. al Tempo I



sub.meno mosso ♩=75 poco a poco allarg.

374

3 3 3 *sf* *sf* *f* 3

molto meno mosso
55 largamente ♩=50

378

In 4 ♩=45 In 2 ♩=50

380

384

56 3 *ff* *ff*

395 57 In 4 ♩=40 12 *fff* *ffp* *fff*

400 12 12 12 12

402 12 12

403 molto. allarg. 12

374

3 3 3 *sf* *sf* *f* 3

molto meno mosso
55 largamente ♩=50

378

In 4 ♩=45 In 2 ♩=50

380

384

56 3 *ff* *ff*

395 57 In 4 ♩=40 12 *fff* *ffp* *fff*

400 12 12 12 12

402 12 12

403 molto. allarg. 12